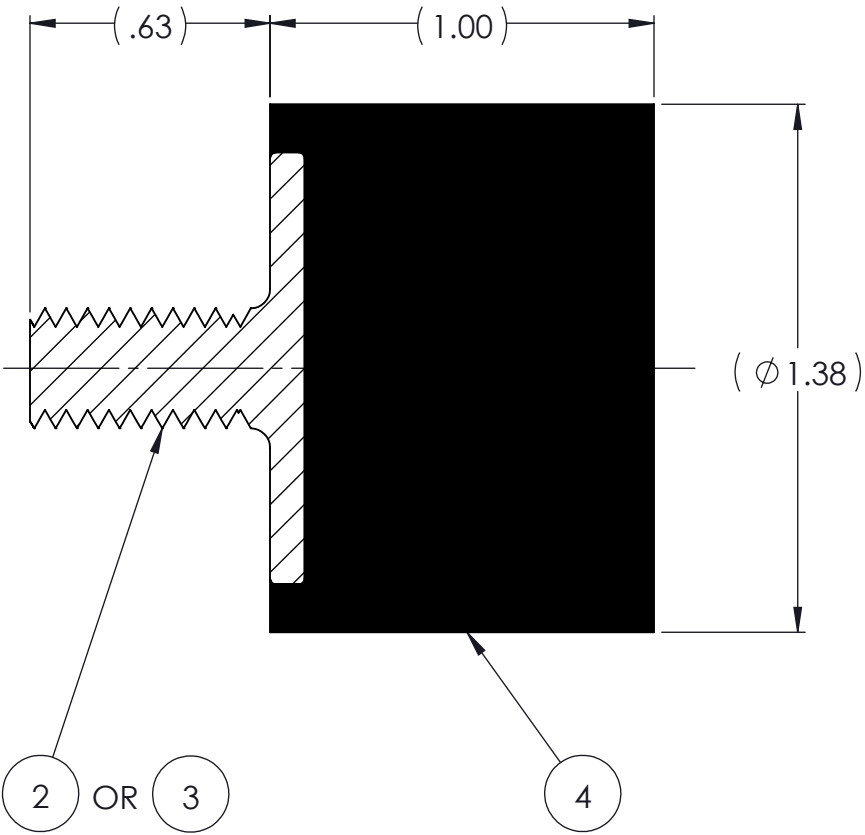
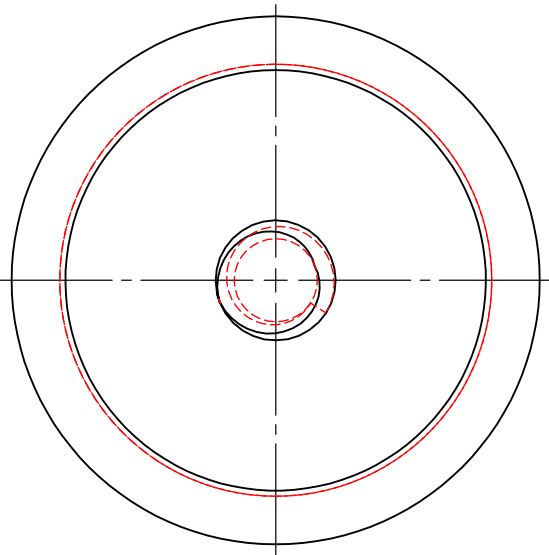
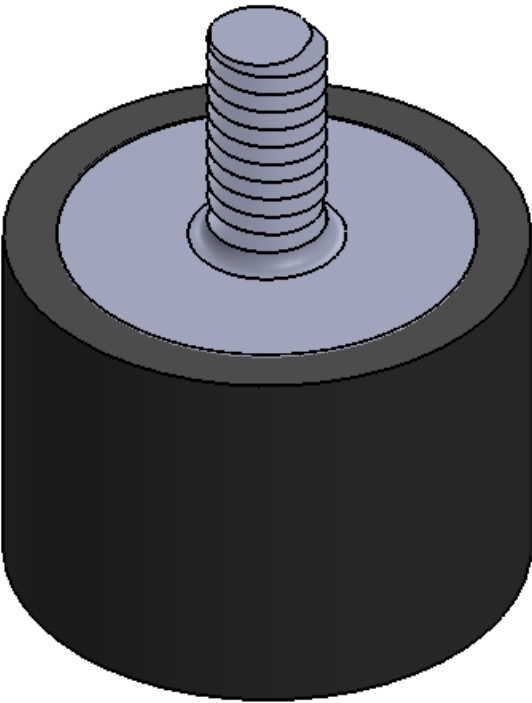


REVISIONS			
REV.	DESCRIPTION	DATE	APPROVED
1	INITIAL RELEASE OF DRAWING	8/11/2014	BS



NOTES:

- 1 MATERIAL: ELASTOMER AND DUROMETER OF 40, 50, 60 OR 70 TO BE SPECIFIED.
- 2 ALL DIMENSIONS ARE REFERENCE.
- 3 AVAILABLE WITH THREADS OF 5/16-18 UNC X 5/8" AND M8 X 1.25 X 5/8".

AR	ELASTOMER	K143-4		4
1	MK430-M8-5/8	MK430-M8-5/8		3
1	MK430-CC	MK430-CC		2
	K143	K143		1
QTY.	DESCRIPTION	PART NUMBER	MATERIAL OR NOTES	ITEM

PROPRIETARY AND CONFIDENTIAL <small>THE INFORMATION CONTAINED IN THIS DRAWING IS THE SOLE PROPERTY OF KARMAN RUBBER. ANY REPRODUCTION IN PART OR AS A WHOLE WITHOUT THE WRITTEN PERMISSION OF KARMAN RUBBER IS PROHIBITED.</small>	SIGNATURE		DATE	UNLESS OTHERWISE SPECIFIED: DIMENSIONS ARE IN INCHES TOLERANCES: .X = .XX = ± 0.031 .XXX = ANGLES = ± 1° INTERPRET GEOMETRIC TOLERANCING PER: ASME Y14.5M-1994
	DRAWN	B. SENECAL	08/11/2014	
	CHECK	S. BROWN	08/11/2014	
	ENGR	B. SENECAL	08/11/2014	
	QA			
	STRESS			
	APPR			

**KARMAN RUBBER VIBRO-INSULATORS®**  
FOR CONTROLLING NOISE, SHOCK & VIBRATION

<b>B</b>	SIZE	CAGE CODE
	<b>DO NOT SCALE DRAWING</b>	

TITLE: K143 SERIES VIBRO-INSULATOR WWW.KARMAN.COM			
DWG. NO. K143		REV 1	
SCALE: 2:1	WEIGHT: 2.0 OZ.	SHEET 1 OF 1	